

grain

a modern first shawl ♥ by Tin Can Knits



Learn to knit with Alexa and Emily!
The Grain Shawl is part of **The Simple Collection** - a learn to knit series with excellent free patterns and clear tutorials.


From your first scarf, to mittens, socks, and sweaters, learn all you need to know to make modern seamless knits for the entire family.

Is this your very first shawl? We've created an **in-depth tutorial** to walk you through each step!

sizing: Finished shawl measures 63" across and 23" deep

materials:

- Yarn:** 600 yards worsted / aran weight yarn
700 yards dk weight yarn
800 yards sock / fingering weight yarn
(sample was knit using **Sweet Fiber Cashmere Aran**, 1 skein of 'moonstone', 1 skein of 'chartreuse', 2 skeins each of 'smoke' and 'olive')
- Gauge:** in worsted (dk, fingering): 14 (20, 24) sts and 36 (40, 52) rows / 4" in garter stitch
- Needles:** Worsted: US #9 / 5.5mm 32" circular needle
DK: US #7 / 4.5mm 32" circular needle
Fingering: US #4 / 3.5mm 32" circular needle
(or as required to meet gauge)
- Notions:** stitch markers, darning needle

 ravelry :: cast on

GRAIN shawl

© Tin Can Knits 2016 www.tincanknits.com
in-depth tutorials ▪ excellent support ▪ fabulous free patterns

from **The Simple Collection**

1

join us ▪      



pattern:

This shawl is knit back and forth in rows and increases from the top center outwards.

Cast on 9 sts using either the **garter tab cast on** as follows or use a regular cast on and proceed to Set up row.

Garter tab cast on: Cast on 3 sts provisionally. Knit 6 rows. Knit 7th row, then pick up 3 sts along the border of the small garter rectangle you have just knit, then undo the provisional cast on and put the 3 cast-on sts on the left hand needle, and knit them. [9 sts]

Set up row (WS): k3, PM, k1, PM, k1, PM, k1, PM, k3

Row 1 (RS): k3, SM, yo, knit to marker, yo, SM, k1, SM, yo, knit to marker, yo, SM, k3 [4 sts increased]

Row 2 (WS): knit

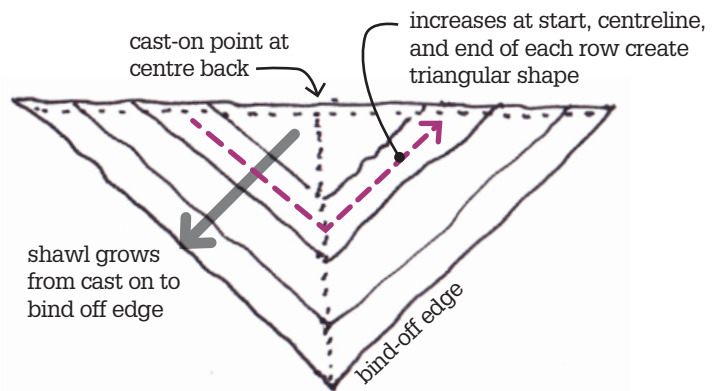
Work rows 1 and 2 until you have 269 (357, 433) sts or until shawl reaches the desired size (*note that a larger shawl will require more yardage*). Bind off all sts loosely.

finishing:

Weave in your ends, block your shawl if desired, then wrap yourself up in luxury as you head out for brunch.



grain shawl construction:



? abbreviations:

- k - knit
- PM - place marker
- RS - right side
- SM - slip marker
- st(s) - stitch(es)
- WS - wrong side
- yo - yarn over

GRAIN shawl

© Tin Can Knits 2016 www.tincanknits.com
 in-depth tutorials ■ excellent support ■ fabulous free patterns

from The Simple Collection

2

join us ■



Tin Can Knits ▪ in Vancouver + Edinburgh ▪ www.tincanknits.com



gramps



vivid



sitka spruce



low tide



stovetop



bonny



bumble



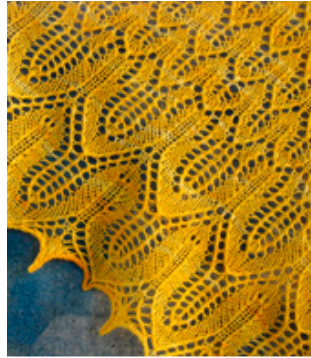
antler mittens



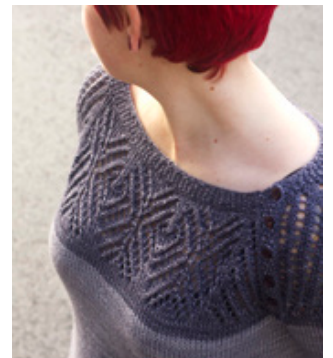
lush



bounce



sunflower



snowflake



antler



paddle



playdate



pop blanket