



HONEYCOMB BERET & COLLAR

designed by Irina Poludnenko



EASY

SIZE

One size

KNITTED MEASUREMENTS

Beret Circumference 20 1/2"/52cm

Beret Height 10"/25.5cm

Collar Circumference 20 1/2"/52cm

Collar Height 9"/23 cm

MATERIALS

For Beret

- 2 balls Tahki Yarns **PRESTO** 45% wool, 46% acrylic, 3% nylon, 3% mohair (1.75oz/50g; 60yds/55m) in **color #02 curry**

MATERIALS for Beret (cont.)

- One size 10½ (6.5mm) circular needle, 16"/40 cm long **OR SIZE TO OBTAIN GAUGE**
- One 1"/25mm button

For Collar

- 3 balls Tahki Yarns **PRESTO** 45% wool, 46% acrylic, 3% nylon, 3% mohair (1.75oz/50g; 60yds/55m) in **color #02 curry**
- One pair size 10½ (6.5mm) needles **OR SIZE TO OBTAIN GAUGE**
- Two 1"/25mm buttons

For Both Beret & Collar

- One pair size 9 (5.5mm) needles
- Stitch markers
- Yarn needle

GAUGE

12 sts and 17 rows = 4"/10 cm in Ridge Pattern with larger needles

TAKE TIME TO CHECK GAUGE

PATTERN STITCHES

P2, k2 rib

Ridge Pattern

* Purl 1 round, knit 3 rounds; rep from * for Ridge Pattern.

BERET

Band

With smaller needles, cast on 10 sts.

Row 1 (RS) Slip 1, * p2, k2; rep from * to last st, k1.

Rep this row 3 more times.

Buttonhole Row (RS) Work 4 sts in rib, bind off 2 sts, work to end of row.

Next Row (WS) Work 4 sts in rib, cast on 2 sts, work 4 sts in rib.

Work 2 rows even. Pm at beg of next row to mark point to start picking up sts.

Work even until piece measures 22" from beg. Bind off all sts in rib.

Top

With RS facing and larger (circular) needle, pick up 88 sts along side edge of

Band, starting at marker and working to end. Pm and join for working in the round, being careful not to twist.

(RS) Begin Ridge Pattern; work 16 rnds.
Purl 1 rnd.

Dec Rnd * K2tog, k6; rep from * around – 77 sts.

Knit 2 rnds, purl 1 rnd.

Dec Rnd * K2tog, k5; rep from * around – 66 sts.

Knit 2 rnds, purl 1 rnd.

Dec Rnd * K2tog, k1; rep from * around – 44 sts.

Knit 2 rnds, purl 1 rnd.

Dec Rnd * K2tog; rep from * around – 22 sts.

Knit 2 rnds, purl 1 rnd.

Dec Rnd * K2tog; rep from * around – 11 sts.

Cut yarn leaving a long tail, draw through remaining sts and fasten securely in place.

FINISHING

Sew button opposite Buttonhole. Weave in ends.

COLLAR

Band

With smaller needles, cast on 20 sts.

Row 1 (RS) Slip 1, * p2, k2; rep from * to last 3 sts, p3.

Row 2 Slip 1, * k2, p2; rep from * to last 3 sts, k3.

Rep these 2 rows once more.

Buttonhole Row (RS) Work 4 sts in rib, bind off 2 sts, work 7 sts in rib, bind off 2 sts, work to end of row.

Next Row (WS) Work 4 sts in rib, cast on 2 sts, work 8 sts in rib, cast on 2 sts, rib 4 sts.

Work 2 rows even. Pm at beg of next row.

Work even until piece measures 22" from beg. Bind off all sts in rib.

Bottom

With RS facing and larger needles, pick up 68 sts along side edge of Band, starting at marker and working to end.

Next Row (WS) K4, * pm, k10; rep from * to last 4 sts, k4.

** Knit 1 row; increasing 1 st before each marker – 74 sts.

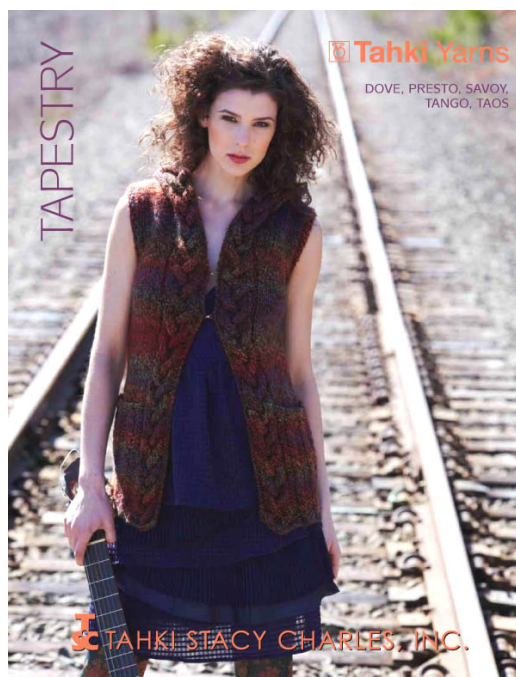
Purl 1 row, knit 2 rows. Rep from ** 4 more times – 98 sts. Bind off all sts.

FINISHING

Sew buttons opposite Buttonholes.

Weave in ends.

FOR MORE PATTERNS IN PRESTO, LOOK FOR:



TAPESTRY, featuring 3 designs in Presto and 11 other projects to knit in Tahki Yarns



FOLKLORICA, featuring 6 knit designs in Presto