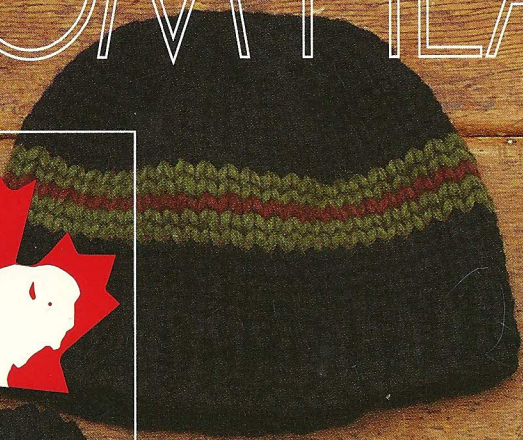
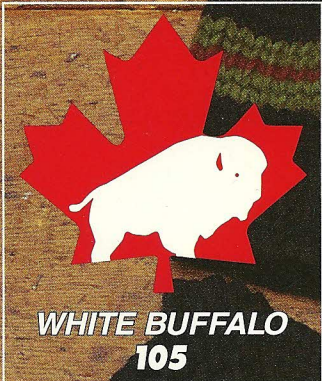


FROM HEAD TO TOE

3.25



A



B



C



D



WHITE BUFFALO
105



E



F



G



H



Toque and Slippers

Intermediate

Sizes

To fit Kid's Size 6 - 8 or Adult.

Materials

White Buffalo (8 oz) [227 g]

Plain Toque with Pom-pon and Slippers (H Set): 1 cake of each: **Main Color (MC)** (Beige Heather 9013), **Contrast A** (Seal Brown 9011)

Maple Leaf Toque and Slippers (C Set): 1 cake of each: **Main Color (MC)** (Cherry 9026), **Contrast A** (White 9005)

Toque and Slippers with Stripes (A, D, E or F Set): 1 cake of each: **Main Color (MC)** (Deep Rust 9025), **Contrast A** (Rust 9024), **Contrast B** (Cherry 9026) or **Main Color (MC)** (Steel Blue 9055), **Contrast A** (Deep Steel Blue 9057), **Contrast B** (Brown 9010) or **Main Color (MC)** (Black 9047), **Contrast A** (Olive 9030), **Contrast B** (Deep Rust 9025) or **Main Color (MC)** (Slate 9045), **Contrast A** (Ivory 9014), **Contrast B** (Ice Blue 9053)

Fair Isle Toque and Slippers (B or G Set): **Main Color (MC)** (Charcoal Heather 9046), **Contrast A** (Cherry 9026), **Contrast B** (White 9005) or **Main Color (MC)** (Ice Blue 9053), **Contrast A** (Ice Rose 9066), **Contrast B** (White 9005)

Set of four sizes 7 mm (U.S. 10½) and 7½ mm (U.S. 11) double pointed knitting needles or size needed to obtain tension.

Tension

10 sts and 14 rows = 4 ins [10 cm] in stocking st with larger needles.

Stitch Glossary

M1 = Make one st by picking up horizontal loop lying before next st and working into back of loop.

Instructions

The instructions are written for Kid's size. Changes necessary for Adult's size will be written thus ().

Toque

PLAIN TOQUE (H Set)

**With smaller needles and MC, cast on loosely 48 (54) sts dividing 16 (18), 16 (18) and 16 (18) sts on 3 needles. Join in rnd and placing a marker on first st, work in rnds as follows:

1st rnd: (RS). *K1. P1. Rep from * around.

Rep last rnd 2 (4) times more. Place second marker at end of last rnd.

Change to larger needles and proceed as follows:**

Knit until work from second marker measures 4 (4½) ins [10 (11.5) cm].

*****Shape Top: 1st rnd:** *Sl1. K1. pss0. K4. Rep from * around. 40 (45) sts.

2nd rnd: *Sl1. K1. pss0. K3. Rep from * around. 32 (36) sts.

3rd rnd: *Sl1. K1. pss0. K2. Rep from * around. 24 (27) sts.

4th rnd: *Sl1. K1. pss0. K1. Rep from * around. 16 (18) sts.

5th rnd: *Sl1. K1. pss0. Rep from * around. 8 (9) sts.

Break yarn, leaving an end 10 ins [25 cm] long. Twist the end tightly and draw through rem sts. Fasten securely.***

Make pom-pon: Wind A around 3 fingers approx 25 times. Remove from fingers and tie tightly in center. Cut through each side of loops. Trim to a smooth round shape.

TOQUE WITH STRIPES (F Set)

Stripe Pattern

With MC, knit 3 rnds.

With A, knit 4 rnds.

With B, knit 4 rnds.

With MC, knit 1 rnd.

These 12 rnds form Stripe Pat.

Keeping cont of Stripe Pat, work as given for Plain Toque.

TOQUE WITH EARFLAPS (D Set)

First Earflap

With MC, cast on 4 sts.

Working in Stripe pat as given for **Toque with Stripes**, proceed as follows:

1st row: (RS). Inc 1 st in first st. K1. Inc 1 st in next st. K1. 6 sts.

2nd row: Sl1. Purl to end of row.

3rd row: Sl1. M1. Knit to last st. M1. K1.

4th row: With A, Sl1. Purl to end of row.

5th and 6th rows: With A, as 3rd and 4th rows.

7th row: With A, as 3rd row. 12 sts.

With B, beg with purl row, work 4 rows in stocking st, slipping first st at beg of every row.

With MC, beg with purl row, work 2 rows in stocking st, slipping first st at beg of every row. Break yarn.

Second Earflap: Work as given for First Earflap.

Joining row: With WS of Second Earflap facing and MC, cast on loosely 2 (3) sts. P14 (15). Cast on loosely 20 (24) sts. P12 across First Earflap. Cast on 2 (3) sts. 48 (54) sts. Join in rnd and place a marker on first st.

Keeping cont of Stripe Pat, work in rnds until work from joining row measures 5 (6) ins [12.5 (15) cm].

Keeping cont of Stripe Pat, work from *** to *** as given for Plain Toque.

Make pom-pon: Wind 1 strand of MC, A and B around 4 fingers approx 25 times. Remove from fingers and tie tightly in center. Cut through each side of loops. Trim to a smooth round shape.

TOQUE WITH SINGLE STRIPE (A Set)

Work from ** to ** as given for Plain Toque.

With MC, knit 2 (5) rnds.

With A, knit 2 rnds.

With B, knit 1 rnd.

With A, knit 2 rnds.

With MC, knit until work from second marker measures 4 (4½) ins [10 (11.5) cm].

With MC, work from *** to *** as given for Plain Toque.

FAIR ISLE TOQUES AND MAPLE LEAF TOQUE (B, C or G Set)

Work from ** to ** as given for Plain Toque.

Work Chart of your choice to end of chart, noting B Set (Chart I) is for Adult Size only, reading rnds from **right** to left.

Maple Leaf Toque Adult's Size only: Work Chart III to end of chart, reading rnds from **right** to left.

Maple Leaf Toque Kid's Size only: Work Chart IV to end of chart, reading rnds from **right** to left.

With same color as given for last row of Chart, work from *** to *** as given for Plain Toque.

TOQUE WITH WIDE TURN-BACK (E Set)

Stripe Pat

With MC, knit 1 rnd.

With A, knit 1 rnd.

With B, knit 1 rnd.

Last 3 rnds form Stripe Pat.

With smaller needles and MC, cast on loosely 48 (54) sts dividing 16 (18), 16 (18) and 16 (18) sts on 3 needles. Join in rnd and placing a marker on first st, work in rnds as follows:

Keeping cont of Stripe Pat, work in (K1. P1) ribbing as given for Plain Toque for 4 (5) ins [10 (12.5) cm] and work remainder of Toque as given for Plain Toque.

Slippers

PLAIN SLIPPERS (H Set)

**With MC and smaller needles, cast on loosely 18 (24) sts dividing 6 (8), 6 (8) and 6 (8) sts on 3 needles. Join in rnd and placing a marker on first st, work in rnds as follows:

1st rnd: Knit.

2nd rnd: Purl.

Rep last 2 rnds twice more.**

Next rnd: Knit.

*****Arrange Heel Sts:** Knit first 5 (6) sts of rnd and slip last 5 (6) sts of rnd onto one needle for heel. Leave rem 8 (12) sts on 2 rem needles for instep.

Make heel: Next row: (WS). *Sl1P. P9 (11).

Next row: Sl1K. Knit to end of row.

Rep last 2 rows until heel measures 2 (2½) ins [5 (6) cm] ending with RS facing for next row.

Shape heel: 1st row: Sl1K. K5 (7). Sl1. K1. pssso. **Turn.**

2nd row: Sl1P. P2 (4). P2tog. **Turn.**

3rd row: Sl1K. K2 (4). Sl1K. K1. pssso. **Turn.** Rep last 2 rows once more.

6th row: Sl1P. P2 (4). P2tog. 4 (6) sts.

Shape Instep: With RS of work facing, MC and first needle, K4 (6) from heel needle. Pick up and knit 6 (7) sts along left side of heel. With second needle, knit across 8 (12) sts for instep. With third needle, pick up and knit 6 (7) sts along right side of heel. Knit first 2 (3) sts from heel onto end of third needle. 24 (32) sts are now divided as 8 (10) sts on first needle, 8 (12) sts on second needle and 8 (10) sts on third needle.

1st rnd: 1st needle: Knit to last 3 sts. K2tog. K1. **2nd needle:** Knit. **3rd needle:** K1. Sl1K. K1. pssso. Knit to end of needle.

2nd rnd: Knit.

Rep last 2 rnds until there are 18 (24) sts divided as 5 (6) sts on first needle, 8 (12) sts on second needle and 5 (6) sts on third needle.***

Cont even until foot from picked up sts at heel measures 5 (7) ins [12.5 (18) cm].

******Kid's size only: Rearrange sts for toe as follows:** Slip first st from 3rd needle onto end of 2nd needle.

Both Sizes: 18 (24) sts are now divided as 5 (6) sts on first needle, 9 (12) sts on 2nd needle and 4 (6) sts on 3rd needle.

Shape toe: 1st rnd: 1st needle: Knit to last 3

sts. K2tog. K1. **2nd needle:** K1. Sl1K. K1. pssso. Knit to last 3 sts. K2tog. K1. **3rd needle:** K1. Sl1K. K1. pssso. Knit to end of needle. Rep last rnd 1 (2) time(s) more. 10 (12) sts divided as 3 sts on first needle, 5 (6) sts on second needle and 2 (3) sts on third needle. Slip sts on first needle onto third needle. Graft 2 sets of 5 (6) sts tog for toe.****

SLIPPERS WITH STRIPES (D or F Set)

With B, work from ** to ** as given for Plain Slippers.

With MC, knit 1 rnd.

With MC, work from *** to *** as given for Plain Slippers.

Keeping cont of Stripe Pat (as given for Striped Toque), work rem of Slipper as given for Plain Slippers.

SLIPPERS WITH SINGLE STRIPE (A Set)

With MC, work from ** to ** as given for Plain Slippers.

Knit 1 rnd.

Work from *** to *** as given for Plain Slippers.

Knit 0 (3) rnds.

With A, knit 2 rnds.

With B, knit 1 rnd.

With A, knit 2 rnds.

With MC, knit until foot from picked up sts at heel measures 5 (7) ins [12.5 (18) cm].

With MC, work from **** to **** as given for Plain Slippers.

FAIR ISLE SLIPPERS (B or G Set)

With MC, work from ** to ** as given for Plain Slippers.

Knit 1 rnd.

Work from *** to *** as given for Plain Slippers.

Work Chart of your choice to end of chart,

noting B Set (Chart I) is for Adult Size only, reading rnds from **right** to left.

With same color as given for last row of Chart, knit until foot from picked up sts at heel measures 5 (7) ins [12.5 (18) cm].

Work from **** to **** as given for Plain Slippers.

MAPLE LEAF SLIPPERS (C Set)

With A, work from ** to ** as given for Plain Slippers.

With MC, knit 1 rnd.

With MC, work from *** to *** as given for Plain Slippers.

Adult's Size only: With MC, knit 3 rnds.

Both Sizes: With MC, K1 (4). Work 1st row of Chart IV (III), substituting MC for A and A for MC and reading rnd from **right** to left. With MC, K1 (4).

Chart IV (III) is now in position.

Knit Chart IV (III) to end of chart.

With MC, work from **** to **** as given for Plain Slippers.

SLIPPERS WITH THIN STRIPES (E Set)

With MC and smaller needles, cast on loosely 18 (24) sts dividing 6 (8), 6 (8) and 6 (8) sts on 3 needles. Join in rnd and placing a marker on first st, work in rnds as follows:

1st rnd: Knit.

2nd rnd: Purl.

With A, rep last 2 rnds once more.

With B, rep last 2 rnds once more.

With MC, knit 1 rnd.

With MC, work from *** to *** as given for Plain Slippers.

Keeping cont of Stripe Pat (as given for Toque with Wide Turn-Back), work rem of Slipper as given for Plain Slippers.

Chart I (B Set - Adult Size only)

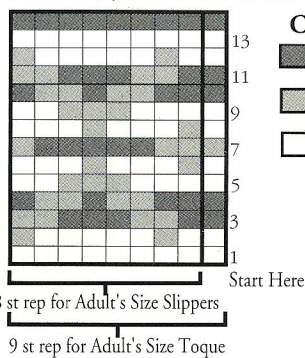


Chart I Key
 ■ = MC
 ■ = Contrast A
 □ = Contrast B

Chart II (G Set)

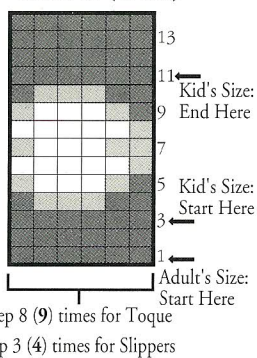


Chart II Key
 ■ = MC
 ■ = Contrast A
 □ = Contrast B

Grafting

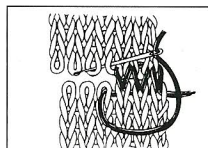
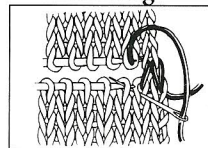


Chart III and IV Key
 ■ = MC
 □ = Contrast A

Chart III - Adult (C Set)

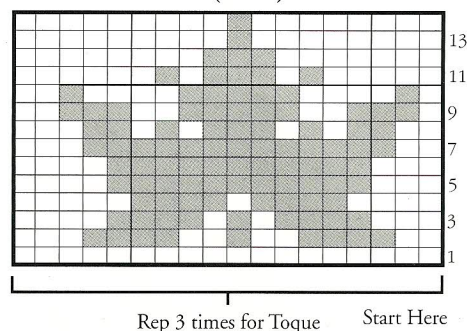


Chart IV - Kid's (C Set)

