

## Norfolk Pillow by DROPS Design

Knitted pillow with cables. Piece is knitted in DROPS Big Merino.

---

DROPS design: Pattern mb-042

Yarn group C or A + A

---

Measurements: Width: approx. 45 cm Height: Approx. 47 cm – casing fits a pillow sized 50 x 50 cm as it should stretch a bit to fit nicely.

Materials:

DROPS BIG MERINO from Garnstudio (belongs to yarn group C)

300 g colour 08, marble

Piece can also be knitted with yarn from:  
"Alternative yarn (yarn group C)" - see link below.

DROPS CIRCULAR NEEDLE (80 cm) SIZE 5 mm – or size needed to get 17 stitches and 22 rows in stocking stitch = width 10 cm and 10 cm vertically.

DROPS CABLE NEEDLE - for cables.

---

## Pattern for DROPS 183-35

INFORMATION FOR PATTERN:

GARTER STITCH (worked in the round):  
1 ridge = 2 rounds. Knit 1 round and purl 1 round.

PATTERN:

See diagrams A.1 to A.4. Diagrams show all rows in pattern seen from the right side.

CAST-OFF TIP:

To avoid a tight cast-off edge you may use a needle ½ size larger.

---



**DROPS 183-35**

## PILLOW:

Worked in the round on circular needle.

Cast on 159 stitches on circular needle size 5 mm with Big Merino. Work 2 ridges in GARTER STITCH - see explanation above. Insert 1 marker at the beginning of round and 1 marker after 83 stitches = the sides. Move markers upwards when working. Then work as follows: Knit 9 stitches, A.1 (= 13 stitches), knit 6 stitches, A.2 (= 27 stitches), knit 6 stitches, A.1 (= 13 stitches) and knit 85 stitches. When A.1 and A.2 have been worked vertically, there are 174 stitches on needle.


Then work as follows: Knit 9 stitches, A.3 (= 16 stitches), knit 6 stitches, A.4 (= 36 stitches), knit 6 stitches, A.3 (= 16 stitches) and knit 85 stitches. Continue pattern like this. REMEMBER THE KNITTING TENSION! When piece measures approx. 46 cm, decrease 3 stitches over each cable in A.3 and decrease 9 stitches evenly over A.4 (= 15 stitches decreased) = 159 stitches. Work 2 ridges and cast off - read CAST-OFF TIP.


## ASSEMBLY:


Fold piece at the markers. Sew top edge edge to edge in outer loops of edge stitches. Lay a pillow inside the casing and then sew in bottom edge.

---

## Diagram explanations

 = knit

 = purl

 = between 2 stitches make 1 yarn over, on next row work yarn over twisted to avoid holes

 = slip 1 stitch on cable needle behind piece, knit 3, purl 1 from cable needle

 = slip 3 stitches on cable needle in front of piece, purl 1, knit 3 from cable needle


 = slip 3 stitches on cable needle behind piece, knit 3, knit 3 from cable needle

Diagram for DROPS 183-35

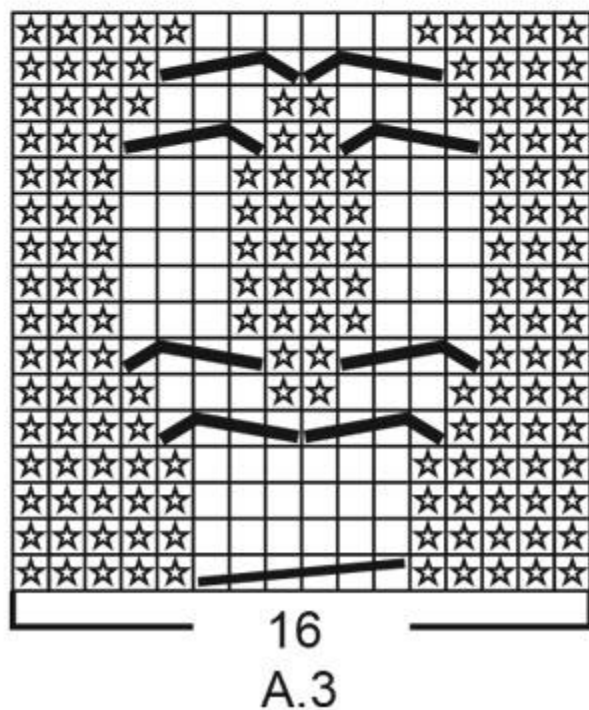
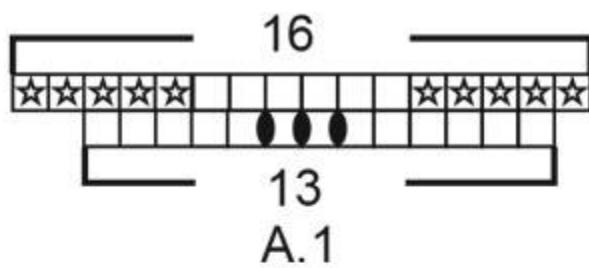
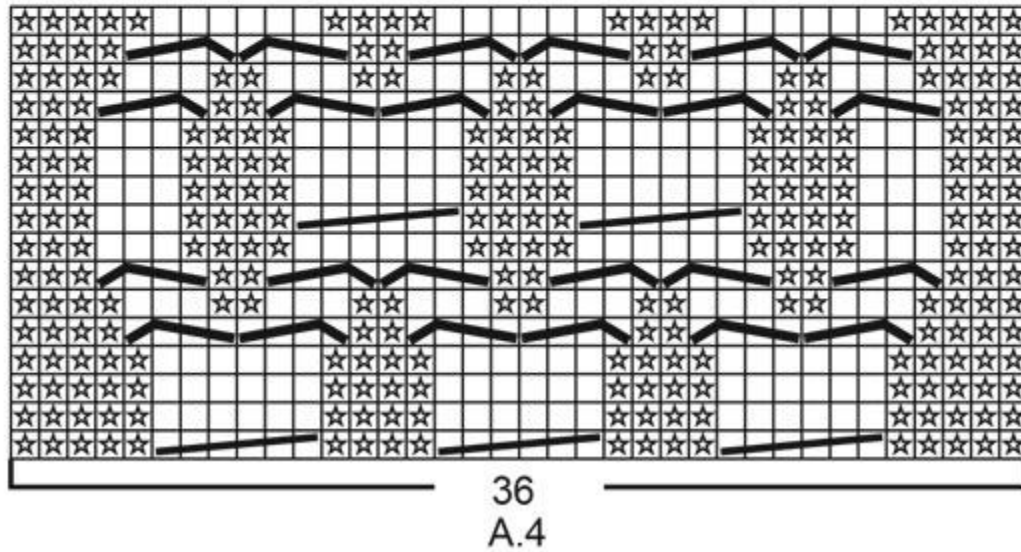
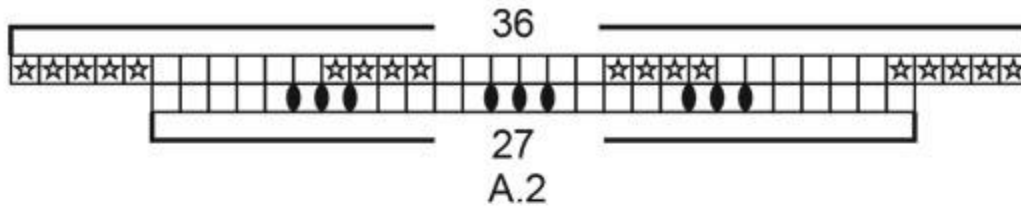
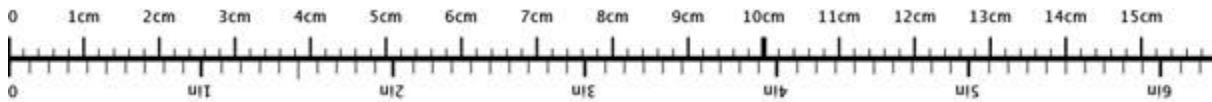


Diagram for DROPS 183-35



Use me to measure your project!



To get the measurement tape to be 100 % accurate, you have to print out the pattern in full scale (and not use the print option "fit to page").



© 1982-2019 DROPS Design A/S. We reserve all rights. This document, including all its sub-sections, has copyrights. Read more about what you can do with our patterns at the bottom of each pattern on our site.

*Needle & Arts Centre*

[www.needlenart.com](http://www.needlenart.com)