



YARN

Zealana TUI

For the Zealana home page see,
<https://www.zealana.com/luxury-knitting-yarns/artisan-tui/>

Approximately

Main Color (MC)

T01 NATURAL : 7.2 balls

Contrast Color (CC)

T02 BLACK : 1.6 balls

NEEDLES

40" or longer circular needles for Magic Loop method.

US 9 (5.50mm)

For a video tutorial on Magic loop method see,

<http://www.youtube.com/watch?v=ldSpc0EZpnk&sns=em>

GAUGE

15 sts and 17 rows = 10 cm (4")
in Stockinette stitch and Color work
with US 9 (5.50mm) needle or needle
size needed to get gauge.

NOTIONS

Stitch markers

Holders

PATTERN NOTES

This sweater is knitted top-down
using Magic Loop method.

STANDARD

ABBREVIATIONS

CO : cast on

Circ : circular needle

dec : decrease

inc : increase

k : knit

k2tog : knit two together

M : marker

MM : main marker

m1kL : make 1 st knit
left leaning stitch

p : purl

PM : place marker

rep : repeat

rnd(s) : round(s)

RM : remove marker

RMM : remove main marker

sl M : slip marker

sl MM : slip main marker

ssk : slip 2 sts knitwise one at
time, then knit those 2 sts
together through back loop

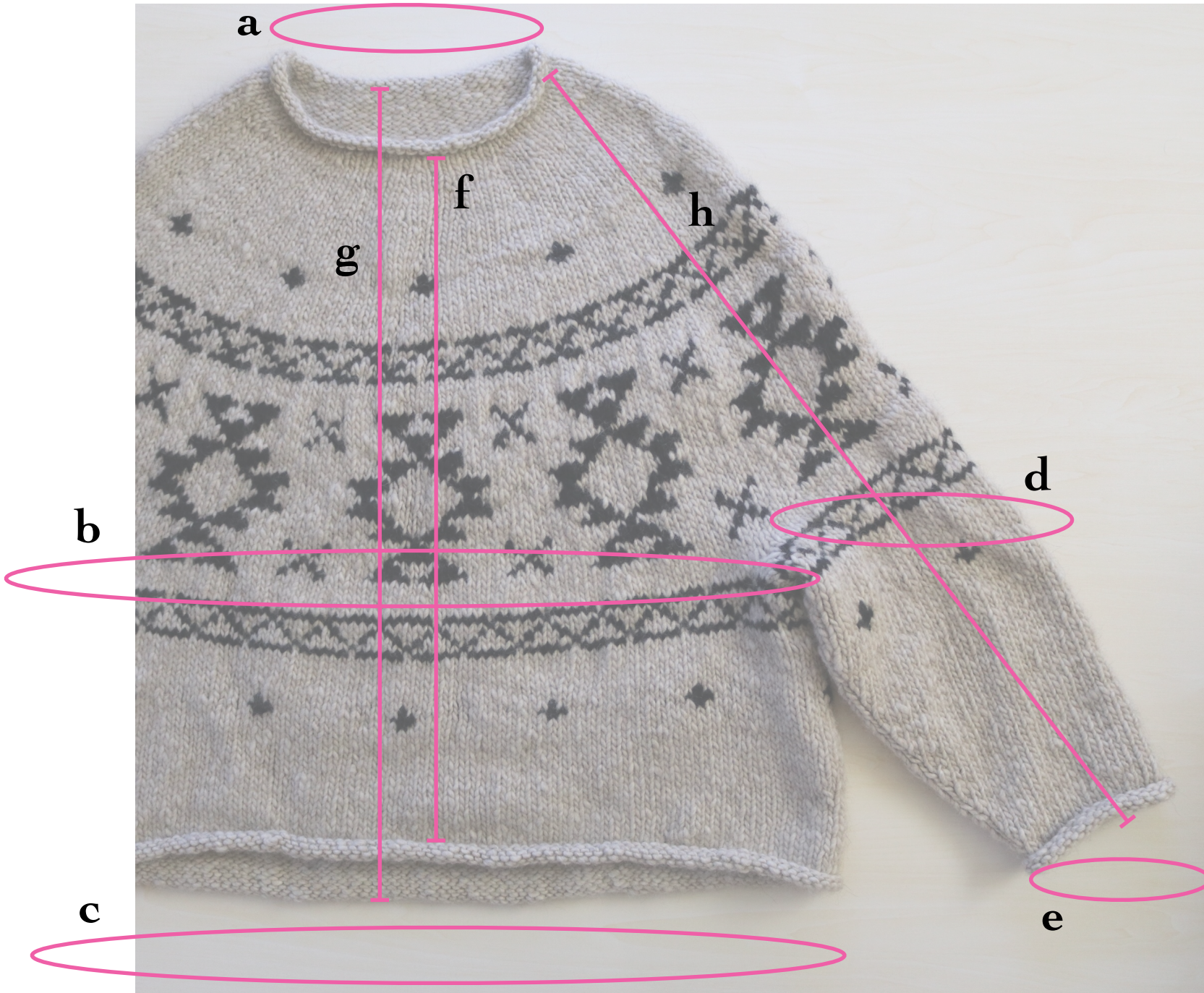
ssp : slip 2 sts knitwise one at
time, then purl those 2 sts
together through back loop

yrn : yarn round needle

Japanese short row method

For a video tutorial on Japanese short
row method see,

<https://youtu.be/L4mdVJAVMM0>



- a) Neck circ
56cm / 22.0"
- b) Max bust circ
126cm / 49.6"
- c) Hem circ
124cm / 48.8"
- d) Max arm circ
44cm / 17.3"
- e) Wrist circ
26cm / 10.2"
- f) Front body
length
56cm / 22.0"
- g) Back body
length
64cm / 25.2"
- h) Neck to wrist
length
78cm / 30.7"

INSTRUCTIONS

SECTION 1

NECK

Using 40" circular cable needle size US 9 (5.50mm) or the size needed to get gauge **CO 70sts** using Long Tail method. Place MM and join work into the round, being careful not to twist your ring of stitches.

Rnd 1

k rnd.

Rnd 2 to 7

sl MM, k rnd.

Rnd 8

sl MM, k3, (m1kL, k7) rep to 4sts before MM, m1kL, k4.
10sts inc, 80sts total.

Rnd 9

sl MM, k rnd.

SECTION 2

SHORT ROW

Using the Japanese short row method.

Row 1 (RS)

sl MM, k8, turn.

Row 2 (WS)

tightly yrn, sl 1wyif,
PM, p7, sl MM, p32, turn.

Row 3 (RS)

tightly yrn, sl 1wyib,
PM, k to MM, sl MM, k7, **RM**, k1,
k2tog with the yrn stitch and the next
stitch, k2, turn.

Row 4 (WS)

tightly yrn, sl 1wyif,
PM, p10, sl MM, p to **M**, **RM**, p1,
ssp with the yrn stitch and the next
stitch, p2, turn.

Row 5 (RS)

tightly yrn, sl 1wyib,
PM, k to MM, sl MM, k10, **RM**, k1,
k2tog with the yrn stitch and the next
stitch, do not turn, k to 3sts before **M**,
ssk with the next stitch and the yrn
stitch,
k1, **RM**, k to MM.

SECTION 3

YOKE

Set up

sl MM, k8 for back body,
PM, k40 for front body,
PM, k32 for back body.
Each body 40sts, 80sts total.

Rnd 1

sl MM, k2, (m1kL, k4) rep to 2sts
before MM, m1kL, k2.
20sts inc, 100sts total.

Rnd 2 to 6

sl MM, k rnd.

Rnd 7

sl MM, k3, (m1kL, k5) rep to 2sts
before MM, m1kL, k2.
20sts inc, 120sts total.

Rnd 8 to 12

sl MM, k rnd.

Rnd 13

sl MM, k2, (m1kL, k4) rep to 2sts
before MM, m1kL, k2.
30sts inc, 150sts total.

Rnd 14

sl MM, k rnd.

SECTION 4

COLOR WORK

Join CC yarn

Rnd 1 to 3

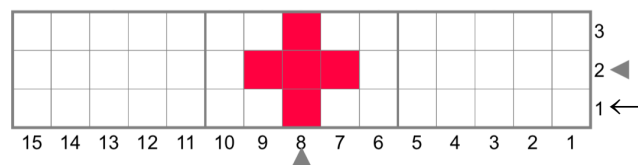
sl MM, (Section 4 chart) rep rnd.

Break CC yarn

Rnd 4 to 6

sl MM, k rnd.

SECTION 4 CHART



SECTION 5

SHORT ROW

Row 1 (RS)

sl MM, k15, sl M, k3, turn.

Row 2 (WS)

tightly yrn, sl 1wyif,
PM, p2, sl M, p15, sl MM, p to M,
sl M, p3, turn.

Row 3 (RS)

tightly yrn, sl 1wyib,
PM, k2, sl M, k to MM, do not turn.

Next Rnd 1

sl MM, k15, sl M, k2, RM, k1,
k2tog with the yrn stitch and the next
stitch, do not turn, k to 3sts before M,
ssk with the next stitch and the yrn
stitch, k1, RM, k2, sl M, k to MM.

Rnd 2

sl MM, k rnd.

Rnd 3

sl MM, (k5, m1kL) 3times,
sl M, (k5, m1kL) rep to M,
sl M, (k5, m1kL) rep to MM.
30sts inc, 180sts total.
Each body 90sts.

Rnd 4

sl MM, k rnd.

SECTION 6

COLOR WORK

Join CC yarn

Rnd 1 to 6

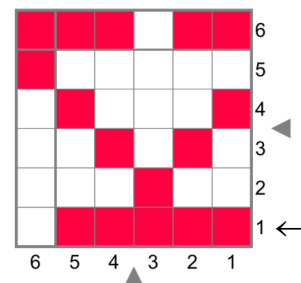
sl MM, (Section 6 chart) rep rnd.

Break CC yarn

Rnd 7

sl MM, k rnd.

SECTION 6 CHART



SECTION 7

SHORT ROW

Row 1 (RS)

sl MM, k18, sl M, k5, turn.

Row 2 (WS)

tightly yrn, sl 1wyif,
PM, p4, sl M, p18, sl MM, p to M,
sl M, p5, turn.

Row 3 (RS)

tightly yrn, sl 1wyib,
PM, k4, sl M, k to MM, do not turn.

Next Rnd 1

sl MM, k18, sl M, k4, RM, k1,
k2tog with the yrn stitch and the next
stitch, do not turn, k to 3sts before M,
ssk with the next stitch and the yrn
stitch, k1, RM, k4, sl M, k to MM.

Rnd 2

sl MM, k rnd.

Rnd 3

sl MM, k1, (m1kL, k3) rep to 2sts
before MM, m1kL, k2.
60sts inc, 240sts total.
Each body 120sts.

Rnd 4

sl MM, k rnd.

SECTION 8

COLOR WORK

Join CC yarn

Rnd 1 to 23

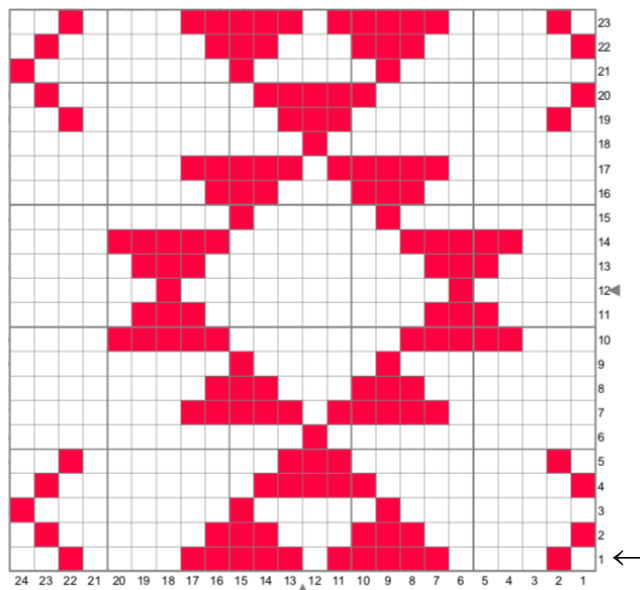
sl MM, (Section 8 chart) rep rnd.

Break CC yarn

Rnd 24

sl MM, k rnd.

SECTION 8 CHART



SECTION 9

SHORT ROW

Row 1 (RS)

sl MM, k24, sl M, k5, turn.

Row 2 (WS)

tightly yrn, sl 1wyif,
PM, p4, sl M, p24, sl MM, p to M,
sl M, p5, turn.

Row 3 (RS)

tightly yrn, sl 1wyib,
PM, k4, sl M, k to MM, do not turn.

Next Rnd 1

sl MM, k24, sl M, k4, RM, k1,
k2tog with the yrn stitch and the next
stitch, do not turn, k to 3sts before M,
ssk with the next stitch and the yrn
stitch, k1, RM, k4, sl M, k to MM.

Rnd 2

sl MM, k5, (m1kL, k10) rep to 5sts
before MM, m1kL, k5.
24sts inc, 264sts total.
Each body 132sts.

SECTION 10

SEPARATE SLEEVES

Rnd 1

RMM,

Place next 52sts (Remove center marker) on a holder and set aside for right sleeve.

Now continue with the body.
Make the underarm of right side.
CO 6sts and PMM, CO 7sts.
Join the front body.

k80 for front body,
Place next 52sts (Remove center marker) on a holder and set aside for left sleeve.

Now continue with the body.
Make the underarm of left side.
CO 6sts and PM, CO 7sts.
Join the back body.
k to MM.

26sts inc.
Each body 93sts.
Each sleeve 52sts

Rnd 2

sl MM, k rnd.
186sts total.

SECTION 11

COLOR WORK

Join CC yarn

Rnd 1 to 6

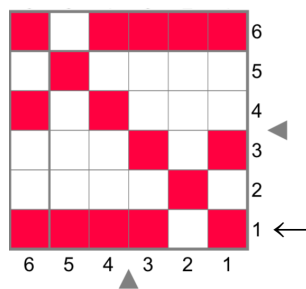
sl MM, (Section 11 chart) rep rnd.

Break CC yarn

Rnd 7 to 9

sl MM, k rnd.

SECTION 11 CHART



SECTION 12

SHORT ROW

Row 1 (RS)

sl MM, k3, turn.

Row 2 (WS)

tightly yrn, sl 1wyif,
PM, p2, sl MM, p93,
sl M, p3, turn.

Row 3 (RS)

tightly yrn, sl 1wyib,
PM, k2, sl M, k to MM, do not turn.

Next Rnd 1

sl MM, k2, RM, k1,
k2tog with the yrn stitch and the next
stitch, do not turn, k to 3sts before M,
ssk with the next stitch and the yrn
stitch, k1, RM, k2, sl M, k to MM.

Rnd 2

sl MM, k rnd.

Rnd 3

sl MM, (k2tog, k29) rep rnd.
6sts dec, 180sts total.

Rnd 4

RMM, k1, PMM, k to MM.

SECTION 13

COLOR WORK

Join CC yarn

Rnd 1 to 3

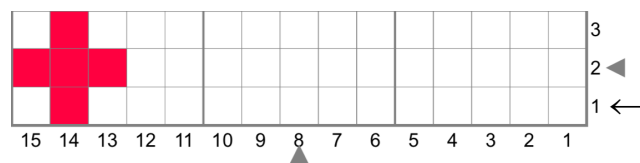
sl MM, (Section 4 chart) rep rnd.

Break CC yarn

Rnd 4 to 6

sl MM, k rnd.

SECTION 13 CHART



SECTION 14

SHORT ROW

Row 1 (RS)

sl MM, k9, turn.

Row 2 (WS)

tightly yrn, sl 1wyif,
PM, p8, RMM, p1, PMM, p to M,
sl M, p10, turn.

Row 3 (RS)

tightly yrn, sl 1wyib,
PM, k9, sl M, k to MM, do not turn.

Next Rnd 1

sl MM, k9, RM, k1,
k2tog with the yrn stitch and the next
stitch, do not turn, k to 3sts before M,
ssk with the next stitch and the yrn
stitch, k1, RM, k9, sl M, k to MM.
Each body 90sts,
180sts total.

Rnd 2 to 7

sl MM, k rnd.

Rnd 8

sl MM, k2, k2tog, k to 4sts before M,
ssk, k2, sl M, k2, k2tog, k to 4sts
before MM, ssk, k2.
4sts dec, 176sts total.

Rnd 9 to 14

sl MM, k rnd.

SECTION 15

SHORT ROW

Row 1 (RS)

sl MM, k17, turn.

Row 2 (WS)

tightly yrn, sl 1wyif,
PM, p16, sl MM, p to M,
sl M, p17, turn.

Row 3 (RS)

tightly yrn, sl 1wyib,
PM, k16, sl M, k to MM, do not turn.

Next Rnd 1

sl MM, k16, RM, k1,
k2tog with the yrn stitch and the next
stitch, do not turn, k to 3sts before M,
ssk with the next stitch and the yrn
stitch, k1, RM, k16, sl M, k to MM.
Each body 88sts,
176sts total.

Rnd 2 to 6

Or until you have your favorite length.
sl MM, k rnd.

Bind off

SECTION 16

SLEEVES

Set up Rnd 1

Using US 9 (5.50mm) needle.

Join MC yarn with RS facing.

Beginning at center of underarm,

pick up and knit **8sts**,

pick up and knit **52sts** from holder,

pick up and knit **8sts** from under arm.

68sts total.

Place M and join work into the round.

Set up Rnd 2

k2, k2tog, k to 4sts before M, ssk, k2.

2sts dec, 66sts total.

Next / color work

Join CC yarn

Rnd 1 to 6

sl MM, (Section 16 chart) rep rnd.

Break CC yarn

Rnd 7

sl MM, k rnd.

Rnd 8

sl MM, k2, k2tog, k to 4sts before M,
ssk, k2. 2sts dec, 64sts total.

**Rnd 7 and 8 rep 2 more
times.**

4sts dec, 60sts total.

Rnd 7 rep 1 more time.

Next / color work

Join CC yarn

Rnd 1 to 3

sl MM, (Section 4 chart) rep rnd.

Break CC yarn

Rnd 4 and 5

sl MM, k rnd.

Rnd 6

sl MM, k2, k2tog, k to 4sts before M,
ssk, k2. 2sts dec, 58sts total.

**Rnd 4 to 6 rep 12 more
times.**

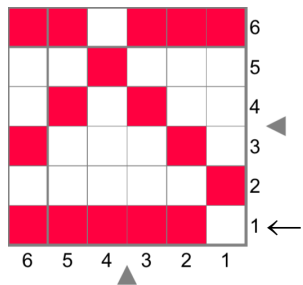
24sts dec, 34sts total.

Next Rnd 1 to 5

sl MM, k rnd.

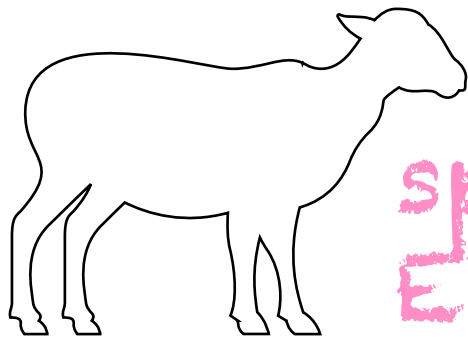
Bind off

SECTION 16 CHART





Thank you!



special thanks
EYLUL yarns Yuri and kumiko