

Snow Blocks by DROPS Design

Knitted blanket with garter stitch and textured pattern in DROPS Nepal. Work piece in squares that are sewn together when finished.



DROPS 214-52

SIZE:

Piece measures approx. Width = 96 cm Length = 144 cm

1 square measures approx. 24 x 24 cm.

MATERIALS:

DROPS NEPAL from Garnstudio 1050 g colour 0100, off white

KNITTING TENSION:

19 stitches in width and 25 rows vertically in stocking stitch or 38 rows vertically in garter stitch = 10 x 10 cm..

NEEDLES:

NEEDLES SIZE 4 mm

Needle size is only a suggestion! If you have too many stitches on 10 cm switch to a larger needle size. If you have too few stitches on 10 cm switch to a smaller needle size.

Pattern for DROPS 214-52

EXPLANATION FOR THE PATTERN:

GARTER STITCH (back and forth):

Knit all rows.

1 ridge vertically = knit 2 rows.

PATTERN:

See diagrams A.1 to A.6. Diagrams show all rows in pattern seen from the right side.

Diagram A.x shows how squares are placed when blanket is sewn together.

START THE PIECE HERE:

BLANKET - SHORT OVERVIEW OF THE PIECE:

Worked back and forth. Work 24 squares and sew them together when finished.

SQUARE:

Cast on 46 stitches on needle size 4 mm with Nepal.

Knit 1 row from wrong side, then work 5 ridges in GARTER STITCH - see explanation above, = 6 visible ridges from right side and next row should be worked from right side.

REMEMBER THE KNITTING TENSION!

Now work 1 short row in each side and work according to A.1, A.2 and A.3 as follows, begin from right side: Knit 6 stitches from right side, turn piece. Knit 6 stitches from wrong side. Turn piece and work as follows from right side: Work 6 stitches in garter stitch, work A.1 over 4 stitches (= 1 time in width), work A.2 over the next 28 stitches (= 4 times in width), work A.3 over 2 stitches (= 1 time in width), and work 6 stitches in garter stitch = 51 stitches. Turn piece, knit 6 stitches from wrong side, turn piece and knit 6 stitches from right side. Turn piece and work as follows from wrong side: Work 6 stitches in garter stitch, work A.3 over 2 stitches, work A.2 the next 32 stitches (= 4 times in width), work A.1 over 5 stitches and work 6 stitches in garter stitch.

Now work according diagram A.4, A.5 and A.6, first row is from right side:

Work 6 stitches in garter stitch, work A.4 over 5 stitches (= 1 time in width), work A.5 over the next 32 stitches (= 4 times in width), work A.6 over 2 stitches, and work 6 stitches in

garter stitch.

Then work as follows from wrong side: Work 6 stitches in garter stitch, work A.6 over 2 stitches, work A.5 over the next 32 stitches (= 4 times in width), work A.4 over 5 stitches (= 1 time in width) and work 6 stitches in garter stitch.

Continue to work according to diagrams A.4, A.5 and A.6 until piece measures approx. 19 cm - adjust to finish after 1st row in diagram so that number of stitches is 46, next row is from wrong side.

Work 1 short row in each side, begin from wrong side: Knit 6 stitches from wrong side, turn piece. Knit 6 stitches from right side. Turn piece to continue working from wrong side as follows: Knit over all stitches, turn piece, knit 6 stitches from right side, turn piece and knit 6 stitches from wrong side.

Turn piece and work 5 ridges = 6 ridges visible from right side of piece. Cast off knitting from right side. Squares should measure approx. 24 cm x 24 cm.

Work 24 squares in total.

ASSEMBLY:

Place squares so that they are placed as shown in diagram A.x, there should be 6 squares in width and 4 squares vertically. Make sure that all squares are placed in the same direction.

Sew squares together in strips that are sewn together - sew ridge to ridge in outermost loop and sew stitch to stitch to get a nice and flat seam.

Diagram explanations

□ = knit from the right side, purl from the wrong side

⊠ = purl from the right side, knit from the wrong side

◻ = between 2 stitches make 1 yarn over, work yarn over twisted on next row. It should not make a hole!

◻◻ = between 2 stitches make 1 yarn over, purl yarn over on next row. They should make holes.

◻◻◻ = slip 1 stitch knitwise, knit 2, pass slipped stitch over stitches worked

■ = no stitch, skip this square when working

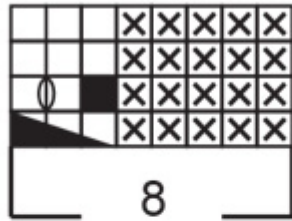
← = knitting direction

Diagrams for DROPS 214-52

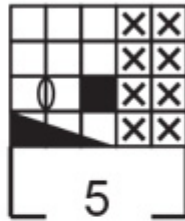
A.6



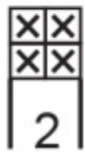
A.5



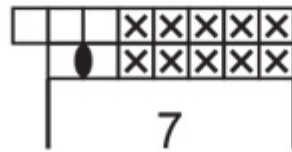
A.4



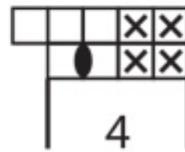
A.3



A.2



A.1



A.x

