

## Stretch Out by DROPS Design

Knitted socks in DROPS Big Merino. Piece is knitted in rib with displacement. Size 35 to 43 Theme: yoga.

DROPS design: Pattern mb-054

Yarn group C or A + A

Size: 35/37 - 38/40 - 41/43

Length on leg: approx. 12-13-14 cm

Materials:

DROPS BIG MERINO from Garnstudio (belongs to yarn group C)

100-150-150 g colour 11, plum

ACCESSORIES FOR THE PIECE:

KNITTING TENSION:

19 stitches in width and 25 rows vertically in stocking stitch  
= 10 x 10 cm.

24 stitches in width and 22 stitches vertically with rib (= knit 1/purl 1) = 10 x 10 cm.

NEEDLES:

DROPS DOUBLE POINTED NEEDLES SIZE 4 mm

Needle size is only a suggestion! If you have too many stitches on 10 cm switch to larger needles. If you have too few stitches on 10 cm switch to smaller needles.



**DROPS 193-24**

## Pattern for DROPS 193-24

EXPLANATION FOR THE PATTERN:

---

PATTERN:

See diagrams A.1 and A.2.

---

START THE PIECE HERE:

---

SOCKS - SHORT OVERVIEW OF THE PIECE:

Worked in the round on double pointed needles from foot and up to leg.

SOCK:

Cast on 44-48-50 stitches on double pointed needles size 4 mm with Big Merino. Knit 1 round. Insert a marker thread at beginning of round. Then work pattern as follows: A.1 (= 8 stitches), knit 1 (= middle stitch on top of foot), A.2 (= 8 stitches), work rib (= knit 1/purl 1) over the next 27-31-33 stitches. Continue in the round like this until piece measures 9-10-11 cm. REMEMBER THE KNITTING TENSION! Now work as follows: Work pattern and rib as before over the first 18-20-20 stitches, cast off the next 25-25-27 stitches (= under foot), work the remaining 1-3-3 stitches on round as before. Work next round as follows: Work pattern as before over the first 18-20-20 stitches, cast on 27-27-29 new stitches (= back of foot), work the remaining 1-3-3 stitches on round = 46-50-52 stitches on round. Continue in the round with pattern A.1, knit 1 and A.2 and rib (= knit 1/purl 1) over the remaining stitches on round. When leg measures 12-13-14 cm cast off with knit over knit and purl over purl. Make sure that the cast-off edge is not too tight. Fasten off. Knit another sock the same way.

---

### Diagram explanations

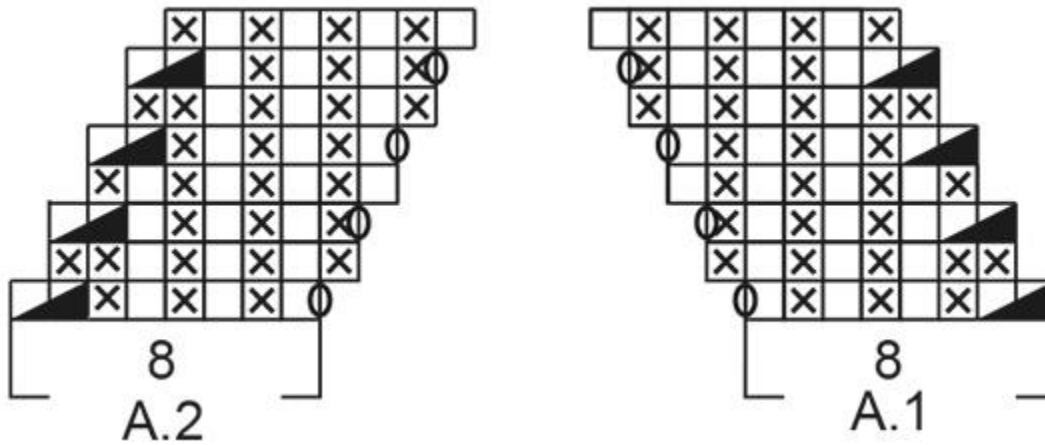
□ = knit

⊗ = purl

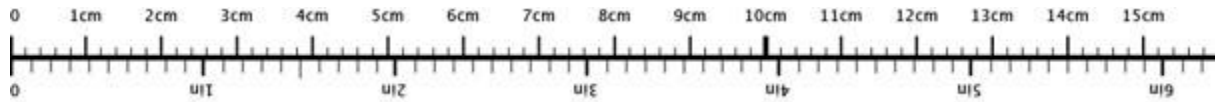
□□ = between 2 stitches make 1 yarn over. On next round purl or knit yarn over twisted - see next round in diagrams.

▣ = purl 2 together

Diagram for DROPS 193-24



Use me to measure your project!



To get the measurement tape to be 100 % accurate, you have to print out the pattern in full scale (and not use the print option "fit to page").



© 1982-2019 DROPS Design A/S. We reserve all rights. This document, including all its sub-sections, has copyrights. Read more about what you can do with our patterns at the bottom of each pattern on our site.

*Needle & Arts Centre*

[www.needlenart.com](http://www.needlenart.com)