

Sweet Ivy by DROPS Design

Knitted jumper for babies and children in DROPS Baby Merino. The piece is worked top down with raglan, wave-pattern and lace-pattern. Sizes 0 - 6 years.

SIZES:

0/1 - 1/3 - 6/9 - 12/18 months (2 - 3/4 - 5/6) years

Child's height in cm:

48/52 - 56/62 - 68/74 - 80/86 (92 - 98/104 - 110/116)

MATERIALS:

DROPS Baby Merino from Garnstudio
100-100-150-150 (150-200-200) g

NEEDLES:

CIRCULAR NEEDLE SIZE 3 MM: Length 40 cm and 60 cm.

CIRCULAR NEEDLE SIZE 2.5 MM: Length 80 cm.

DOUBLE POINTED NEEDLES SIZE 3 MM.

DOUBLE POINTED NEEDLES SIZE 2.5 MM.

The technique MAGIC LOOP can be used – you then only need circular needle of 80 cm in each size

KNITTING TENSION:

24 stitches in width and 32 rows in height with stocking stitch = 10 x 10 cm.

NOTE: Needle size is only a guide. If you get too many stitches on 10 cm, change to a larger needle size. If you get too few stitches on 10 cm, change to a smaller needle size.

Magic loop – [See the technique here](#)



DROPS Baby 42-7

Pattern for DROPS Baby 42-7

EXPLANATIONS FOR THE PATTERN:

RIDGE/GARTER STITCH (worked in the round):
1 ridge in height = 2 rounds; Knit 1 round and purl 1 round.

RIDGE/GARTER STITCH (worked back and forth):
Knit all rows.
1 ridge = knit 2 rows.

PATTERN:

See diagrams A.1 and A.2. The diagrams show all rows in the pattern from the right side.

INCREASE TIP (for sides of body):
Work until there are 2 stitches left before the marker, make 1 yarn over, knit 4 (marker thread sits between these 4 stitches), make 1 yarn over.
On the next round work the yarn overs twisted to avoid holes. Then work the new stitches in stocking stitch.

RAGLAN:

Increase 1 stitch on each side of the 2 stocking stitches in each transition between body and sleeves (8 stitches increase on row/round). Increase 1 stitch by making 1 yarn over.
On the next row (wrong side) purl the yarn overs twisted to avoid holes.
On the next round (i.e. when working in the round) knit the yarn overs twisted to avoid holes.
Then work the new stitches in stocking stitch.

DECREASE TIP (sleeves):

Decrease 1 stitch on either side of the marker as follows: Work until there are 3 stitches left before the marker, knit 2 together, knit 2 (marker sits between these 2 stitches), slip 1 stitch as if to knit, knit 1 and pass the slipped stitch over the knitted stitch.

BUTTONHOLES:

2 buttonholes are worked on the bands at the back of the neck.
Work from the right side when there are 3 stitches left on the row as follows: Make 1 yarn over, knit 2 together and knit 1. On the next row, knit the yarn over to leave a hole.

The first buttonhole is worked when the neck measures 1½ cm. Then work the other buttonhole after 4 cm.

START THE PIECE HERE:

JUMPER – SHORT OVERVIEW OF THE PIECE:

The piece is first worked back and forth from mid-back and top down. When the split is finished, it is continued in the round. The yoke is divided for the body and sleeves and the body continued in the round. The sleeves are worked in the round with double pointed needles.

NECK:

Cast on 73-77-81-85 (89-93-97) stitches with circular needle size 2.5 mm and DROPS Safran. Work 2 RIDGES back and forth – read description above. Change to circular needle size 3 mm.

YOKE:

READ THE NEXT SECTION BEFORE CONTINUING!

The first row is worked as follows from the right side:

3 band stitches in garter stitch, 11-12-13-14 (15-16-17) stitches in stocking stitch (half back piece), 1 yarn over, 2 stitches in stocking stitch (raglan-line), 1 yarn over, 6 stitches in stocking stitch and increase 4 stitches evenly over these stitches (10 stitches on the sleeve), 1 yarn over, 2 stitches in stocking stitch (raglan-line), 1 yarn over, 0-0-0-1 (2-3-4) stitches in stocking stitch, A.1 (25-27-29-29 (29-29-29) stitches – see the start for your size in the smaller sizes, 0-0-0-1 (2-3-4) stitches in stocking stitch (= front piece), 1 yarn over, 2 stitches in stocking stitch (= raglan-line), 1 yarn over, 6 stitches in stocking stitch and increase 4 stitches evenly over these stitches (10 stitches on the sleeve), 1 yarn over, 2 stitches in stocking stitch (raglan-line), 1 yarn over, 11-12-13-14 (15-16-17) stitches in stocking stitch and 3 band stitches in garter stitch (half back piece).

The first increase to RAGLAN – read description above, is now finished and there are 89-93-97-101 (105-109-113) stitches on the row.

Continue with stocking stitch, A.1 and 3 band stitches in garter stitch on each side and continue to increase to raglan every 2nd row (each row from the right side) – REMEMBER THE KNITTING TENSION and the BUTTONHOLES – read description above.

Increase like this every 2nd row (each row from the right side).

The increased stitches are worked in stocking stitch. NOTE! In sizes 0/1 and 1/3 months first work the new stitches into A.1 then in stocking stitch.

AT THE SAME TIME when the piece measures 6 cm join the piece on the next row from the right side as follows:

Cast off the first 3 stitches and work to the end of the row. When the row is finished, continue in the round. You now are working stocking stitch on the back piece, stocking stitch and A.1 on the front piece.

Move the beginning of the round to mid-back.

Increase to raglan a total of 10-12-13-14 (15-16-18) times = 158-178-190-202 (214-226-246) stitches. Continue without further increases until the piece measures 9-10-11-12 (13-14-15) cm.

Work the next round as follows: Work the first 24-27-29-31 (33-35-38) stitches,

place the next 32-36-38-40 (42-44-48) stitches on a thread for the sleeve, cast on 6-6-6-8 (8-8-8) stitches (in side under sleeve), work 47-53-57-61 (65-69-75) stitches (front piece), place the next 32-36-38-40 (42-44-48) stitches on a thread for the sleeve, cast on 6-6-6-8 (8-8-8) stitches (in side under sleeve), work the last 23-26-28-30 (32-34-37) stitches.

The body and sleeves are finished separately.

BODY:

= 106-118-126-138 (146-154-166) stitches. Insert 1 marker in each side, in the middle of the new stitches cast on under each sleeve.

When the piece measures 3 cm from the division, increase 1 stitch on each side of both markers - read INCREASE TIP.

Increase like this every 2 cm a total of 3-3-3-4 (4-4-4) times = 118-130-138-154 (162-170-182) stitches.

When the piece measures 8-10-11-13 (15-18-21) cm from the division, work 2 ridges over all stitches. Knit 1 round where you increase 18-23-32-33 (42-34-39) stitches evenly spaced = 136-153-170-187 (204-204-221) stitches. Knit 1 round; the yarn overs are knitted twisted to avoid holes.

Now work A.2 over all stitches. When A.2 has been completed in height, loosely cast off.

The jumper measures approx. 25-28-30-33 (36-40-44) cm from the shoulder down.

SLEEVES:

Place the 32-36-38-40 (42-44-48) stitches from the thread on the one side of the piece on double pointed needles size 3 mm and knit up 1 stitch in each of the 6-6-6-8 (8-8-8) stitches cast on under the sleeve = 38-42-44-48 (50-52-56) stitches.

Insert a marker in the middle of the new stitches under the sleeve. Work stocking stitch in the round.

When the sleeve measures 3 cm from the division, decrease 1 stitch on each side of the marker - read DECREASE TIP!

Decrease like this every 5-4-3-3 (4-5-3½) cm a total of 2-3-4-5 (5-5-7) times = 34-36-36-38 (40-42-42) stitches.







When the sleeve measures 11-14-15-18 (21-26-29) cm, change to double pointed needles size 2.5 mm. Work 2 ridges over all stitches. Cast off with knit. Work the other sleeve in the same way.

ASSEMBLY:

Sew the buttons onto the band without buttonholes.

Lay the button-band under the buttonhole-band and sew together at the bottom.

Diagram explanations

-  = knit from right side, purl from wrong side
-  = purl from right side, knit from wrong side
-  = between 2 stitches make 1 yarn over
-  = knit 2 together
-  = slip 1 stitch as if to knit, knit 1 and pass the slipped stitch over the knitted stitch
-  = slip 1 stitch as if to knit, knit 2 and pass the slipped stitch over the knitted stitches

■ = this square has no stitch; go straight to the next symbol in the diagram

Diagram for DROPS Baby 42-7

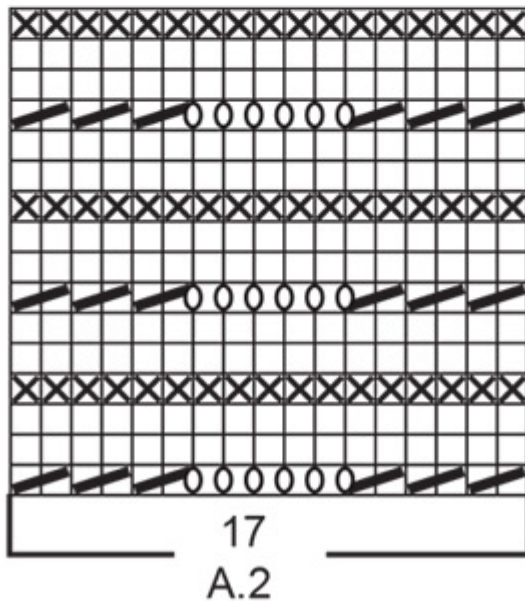
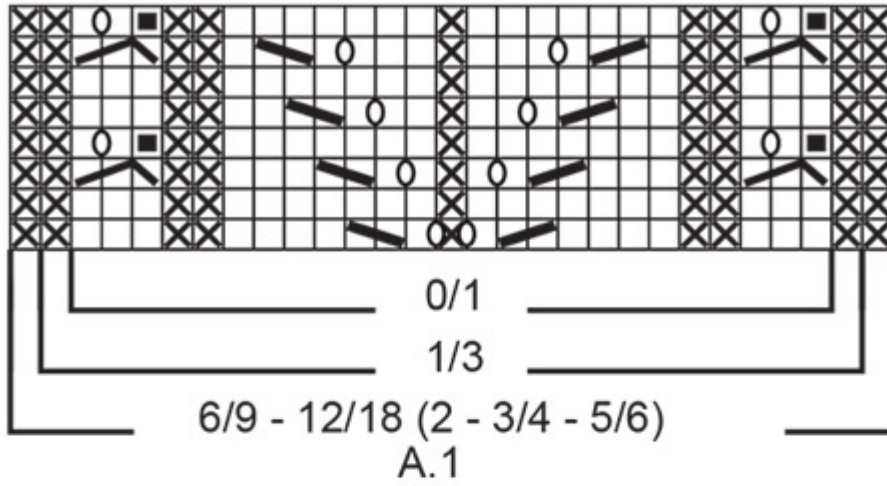
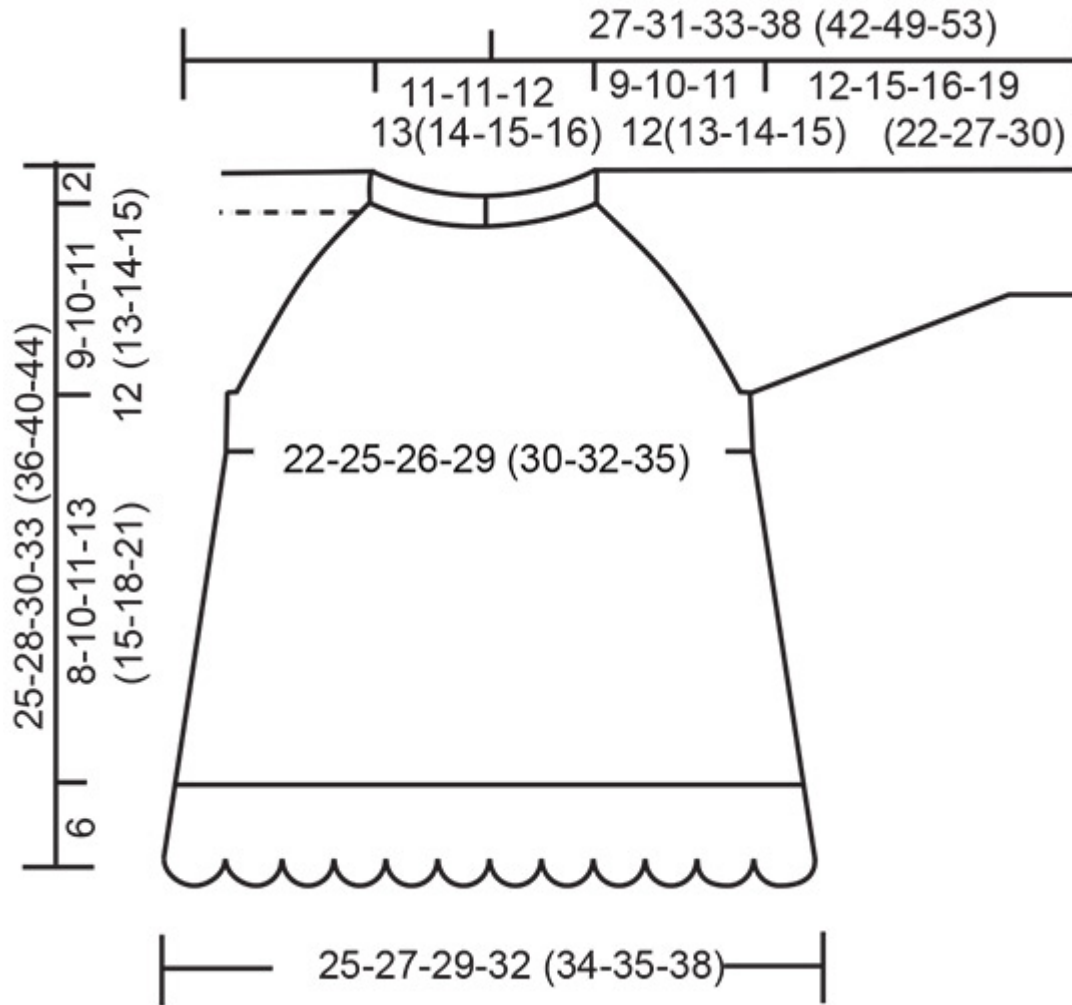
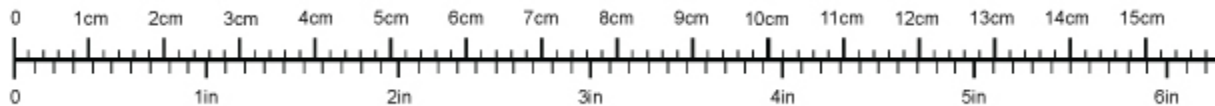


Diagram for DROPS Baby 42-7



Use me to measure your project!



To get the measurement tape to be 100 % accurate, you have to print out the pattern in full scale (and not use the print option "fit to page").

© 1982-2023 DROPS Design A/S. We reserve all rights. This document, including all its sub-sections, has copyrights. Read more about what you can do with our patterns at the bottom of each pattern on our site.