

The Winter Way by DROPS Design

Knitted head band in DROPS Sky. The piece is worked back and forth with cables. Knitted shawl in DROPS Sky. The piece is worked back and forth with cables and garter stitch. Knitted wrist warmers in DROPS Sky. The piece is worked back and forth with cables and garter stitch.

DROPS Design: Pattern no sk-010
Yarn group B

YARN FOR THE WHOLE SET:

Sizes: S/M – M/L – L/XL

Materials:

DROPS SKY from Garnstudio (belongs to yarn group B)
150-150-150 g colour 08, lavender

YARN FOR HEAD BAND:

Size: One-size

Fits head size: approx. 54/56 cm

Materials:

DROPS SKY from Garnstudio (belongs to yarn group B)
50 g colour 08, lavender

YARN FOR SHAWL:

Size: One-size

Measurements: Length in middle: approx. 36 cm. Width at top: approx. 128 cm.

Materials:

DROPS SKY from Garnstudio (belongs to yarn group B)
100 g colour 08, lavender

YARN FOR WRIST WARMERS:

Sizes: S/M – M/L – L/XL

Measurements: Circumference at bottom: 16-17-18 cm.
Circumference at top: 17-18-19 cm. Length: 15-16-17 cm.



DROPS 197-13

Materials:

DROPS SKY from Garnstudio (belongs to yarn group B)
50-50-50 g colour 08, lavender

ACCESSORIES FOR THE PIECE:

HEAD BAND:

KNITTING TENSION:

21 stitches in width and 28 rows in height with stocking stitch
= 10 x 10 cm.

NEEDLES:

DROPS NEEDLES SIZE 4 MM.

The needle size is only a guide. If you get too many stitches on
10 cm, change to a larger needle size. If you get too few
stitches on 10 cm, change to a smaller needle size.

SHAWL:

KNITTING TENSION:

19 stitches in width and 38 rows in height with garter stitch =
10 x 10 cm.

NEEDLES:

DROPS CIRCULAR NEEDLE SIZE 4.5 MM: length 60 cm.

The needle size is only a guide. If you get too many stitches on
10 cm, change to a larger needle size. If you get too few
stitches on 10 cm, change to a smaller needle size.

WRIST WARMERS:

KNITTING TENSION:

21 stitches in width and 42 rows in height with garter stitch =
10 x 10 cm.

NEEDLES:

DROPS NEEDLES SIZE 3.5 MM.

The needle size is only a guide. If you get too many stitches on
10 cm, change to a larger needle size. If you get too few
stitches on 10 cm, change to a smaller needle size.

Pattern for DROPS 197-13

EXPLANATIONS FOR THE PATTERN:

RIDGE/GARTER STITCH (worked back and forth):

1 ridge = Knit 2 rows.

PATTERN:

Head band: See diagram A.1.

Shawl: See diagram A.2

Wrist warmers: See diagram A.2.

The diagrams show all the rows in the pattern seen from the right side.

INCREASE TIP (for wrist warmers):

Increase by making 1 yarn over. On the next round knit the yarn over twisted to avoid a hole.

Then work the new stitch in garter stitch.

START THE PIECE HERE:

HEAD BAND - SHORT OVERVIEW OF THE PIECE:

The piece is worked back and forth and sewn together mid back to finish.

HEAD BAND:

Cast on 51 stitches with needle size 4 mm and Sky. Work 1 RIDGE – read description above. Now work pattern A.1 (= 49 stitches) with 1 edge stitch in garter stitch in each side. Continue back and forth like this until the piece measures approx. 21 cm – adjust so that the next row is the first row in A.1. REMEMBER THE KNITTING TENSION! Place the last 25 stitches on a thread and work the first 26 stitches as follows:

Work pattern as before over these 26 stitches and cast on 1 new stitch at the end of the row = 27 stitches. Turn and continue the pattern back and forth with 1 edge stitch in garter stitch in each side until you have worked 16 rows (= 4 repeats of A.1 in height) from the division, but on the last row from the wrong side cast off the last stitch on the row = 26 stitches. Cut the strand. Place these stitches on a new thread.

Cast on 2 new stitches on the needles, place the 25 stitches from the first thread back on the needles and then work pattern as before from the right side = 27 stitches. Continue back and forth with pattern as before inside the 1 edge stitch in garter stitch in each side until you have worked 16 rows (= 4 repeats of A.1 in height) from the division, but on the last row cast off the

2 first stitches on the row before the remaining stitches are worked = 25 stitches.
Now you plait the head band mid front. Work from the right side as follows:
Turn and work the 25 stitches in pattern as before, then lay the first piece in front of the second piece and the 26 stitches are worked in pattern as before = 51 stitches on the needle. Insert a marker thread here. THE PIECE IS NOW MEASURED FROM HERE! Continue pattern A.1 with 1 edge stitch in garter stitch in each side until the head band measures approx. 21 cm – adjust so that you finish after row 1 or 5 in A.1. Work 1 ridge. Cast off. Sew the head band together mid back in each and every stitch inside the cast-on and cast-off edges. Cut and fasten the strand.

SHAWL - SHORT OVERVIEW OF THE PIECE:

The piece is worked back and forth with circular needle.

SHAWL:

All stitches and yarn overs are knitted. Cast on 15 stitches with circular needle size 4.5 mm and Sky.

ROW 1 (= right side): Knit 1, 1 yarn over, knit 2, 1 yarn over, A.2 (= 9 stitches), 1 yarn over, knit 2, 1 yarn over, knit 1 = 4 stitches increased.

ROW 2 (= wrong side): Knit 1, 1 yarn over, knit as far as A.2, work A.2 over the next 9 stitches, knit until there is 1 stitch left, 1 yarn over, knit 1 = 2 stitches increased.

ROW 3: Knit 1, 1 yarn over, knit as far as A.2, 1 yarn over, work A.2 over the next 9 stitches, 1 yarn over, knit until there is 1 stitch left, 1 yarn over, knit 1 = 4 stitches increased.

REMEMBER THE KNITTING TENSION!

Repeat rows 2 and 3 until the piece measures approx. 36 cm measured along A.2 in middle of shawl – adjust so that you finish after row 1 or 5 in A.2. Loosely cast off with knit from the wrong side. Cut and fasten the strand.

WRIST WARMERS - SHORT OVERVIEW OF THE PIECE:

The piece is worked back and forth and sewn together at the end.

WRIST WARMERS:

Cast on 35-39-41 stitches with needle size 3.5 mm and Sky. Work pattern as follows:

13-15-16 stitches GARTER STITCH - read description above, A.2 (= 9 stitches), 13-15-16 stitches in garter stitch. Continue back and forth like this. REMEMBER THE KNITTING TENSION!

When the piece measures 10-11-12 cm increase 1 stitch inside the 1 edge stitch in garter stitch in each side - read INCREASE TIP = 37-41-43 stitches. The increased stitch is worked in garter stitch. Continue until the piece measures approx. 15-16-17 cm - adjust so that you finish after row 1 or 5 in diagram A.2. Cast off with knit from the wrong side, but to avoid the cast-off edge being tight, make 1 yarn over after each 4th stitch (yarn overs cast off as normal stitches). Cut the strand but leave a length of approx. 25 cm for assembly. Sew the wrist warmer together,

sewing inside the 1 edge stitch in garter stitch. Fasten the strand. Work another wrist warmer in the same way.

Diagram explanations


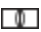
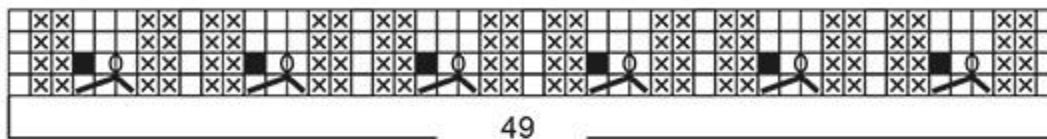
- = knit from right side, purl from wrong side
- ⊗ = purl from right side, knit from wrong side
-  = slip 1 stitch as if to knit, knit 2, pass the slipped stitch over the knitted stitches (= 1 stitch decreased)
-  = between 2 stitches make 1 yarn over. On the next row knit the yarn over to leave a hole
- = this square has no stitch as it was decreased earlier; go straight to next symbol in diagram

Diagram for DROPS 197-13

A.1



A.2

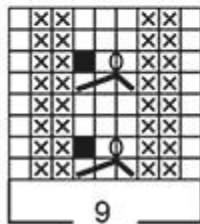


Diagram for DROPS 197-13